



# **JICA Knowledge Co-Creation Program for Long Term Participants (JICA Development Studies Program)**

## **General Information on Core Human Resource Development for Road Asset Management JFY2025**

**長期研修  
「道路アセットマネジメント中核人材育成プログラム」**

This handout provides an overview of the “Core Human Resource Development for Road Asset Management” program/course, which is one of Japan International Cooperation Agency (JICA)’s Knowledge Co-Creation Program (Long-Term). The program will be implemented as part of the Official Development Assistance of the Government of Japan based on bilateral agreement between respective governments.

The objective of the Knowledge Co-Creation Program (Long-Term) is to offer opportunities to people from developing countries to study at higher educational institutions in Japan and to help them build their network of people. This is intended to assist in the human resource development plans of the governments of developing countries and Japan, and eventually to expand and strengthen bilateral ties between the developing countries and Japan.

## 0. Background

### **What is JICA Knowledge Co-Creation Program (KCCP)**

The Japanese Cabinet released the Development Cooperation Charter in June 2023, which stated, “In its development cooperation, Japan has maintained the spirit of jointly creating things that suit partner countries while respecting ownership, intentions and intrinsic characteristics of the country concerned based on a field-oriented approach through dialogue and collaboration. It has also maintained the approach of building reciprocal relationships with developing countries in which both sides learn from each other and grow and develop together.” JICA believes that this ‘Knowledge Co-Creation Program’ will serve as a foundation of mutual learning process.

### **What is JICA Development Studies Program (JICA-DSP)**

JICA-DSP is being carried out by JICA as part of official development assistance (ODA) by the government of Japan. JICA-DSP is offered for international scholars accepted as the participants of JICA’s Human Resource Development Project who are enrolled in a degree program at a Japanese university.

<https://www.jica.go.jp/dsp-chair/english/dsp/overview/index.html>

# 1. Overview

In Japan, amid the aging of infrastructures, emerging risk of a serious accident and the increase in maintenance and repair expenditures are topics of concern. Currently, infrastructures are being constructed across developing countries; however, maintenance has already become a big issue. Systematic infrastructure management utilizing new technologies is essential both for preventing accidents based on preventive maintenance system and minimizing life cycle cost of infrastructures under the conditions of the tight financial grounds and the decreasing number of skilled engineers. Particularly, technologies that utilize the world's most advanced ICT (Information and Communication Technology) are expected to create new business opportunities in the existing infrastructure maintenance market and to offer business expansion opportunities into developing countries that will face similar problems in the near future. Not only developed countries but also developing countries will improve the standard of maintenance by using low-cost preventive maintenance while stressing the necessity to match the needs of infrastructure maintenance with the seeds of technical development, and developing new technologies into more attractive technologies that can be used on-site. Infrastructures should function for several decades.

We aim at contributing to regional revitalization, as well as maintaining the important internal infrastructures to high standard while backing up a variety of regional economic activities. Our responsibility to the future is to create an infrastructure information platform and to pass on the infrastructures that can be used safely with a minimum maintenance burden to the next generation.

Road Asset Management Platform (RAMP)

[https://www.jica.go.jp/english/our\\_work/thematic\\_issues/transportation/ramp/index.html](https://www.jica.go.jp/english/our_work/thematic_issues/transportation/ramp/index.html)

# 2. Objectives

The objective of the Core Human Resource Development for Road Asset Management is to foster young leaders of governmental officials, educators and researchers who contribute to the road asset management in developing countries. This program offers opportunities for such personnel to study at graduate courses for master's degree / doctorate degree in Japanese graduate schools as international students (hereafter referred to as participants). Beyond acquisition of skills and knowledge, this program also aims to have the participants understand and familiarize themselves with Japanese culture and systems. The expected outcome of the program is to develop a network of potential contributors to the road asset management in the development countries.

### 3. Course Outline

#### (1) Target Countries

The course consists of the acceptance of scholars from following target countries.

Southeast Asia and Pacific	Indonesia, Thailand, Timor-leste, Papua New Guinea
East Asia and Central Asia	Kyrgyz Republic, Tajikistan, Uzbekistan
South Asia	Bhutan, Nepal, Pakistan, Bangladesh, Sri Lanka
Latin America and the Caribbean	El Salvador, Chile, Cuba, Honduras, Bolivia
Africa	Zambia, Madagascar, Mozambique, Burkina Faso, Democratic Republic of the Congo, Tanzania, Uganda, South Sudan, Zimbabwe, Cote d'Ivoire, Togo, Benin, Djibouti, Guinea
Middle East and Europe	Egypt, Tunisia

#### (2) Contents of the Program

<p><b>Research Student Program (6 months)</b></p>	<p>Research students are part-time students who utilize their time to prepare for the entrance examination of graduate course students. Research students are able to participate in lectures, receive instruction from the supervising professors and make use of university's facilities.</p> <p>The maximum period for being a research student is six months in principle. Participants are required to prepare for entrance examination of the respective graduate course.</p> <p>Note:</p> <ol style="list-style-type: none"> <li>1. Participants who failed entrance examination will be required to return to their home countries.</li> <li>2. Necessity of research student program will be considered based on interviews with professors of respective Japanese universities.</li> </ol>
<p><b>Graduate Course Program (2 or 3 years)</b></p>	<p>Master's degree course / Doctorate degree course</p> <ul style="list-style-type: none"> <li>- Lecture and practice</li> <li>- Research works for the thesis</li> <li>- Field research in Japan and/or home country</li> </ul> <p>* Field research is to be planned in accordance with the research theme and upon consultation with the supervising professor.</p>

#### (3) Target Participants

This program is designed for the following two types of personnel.

<b>Governmental Officials (Technocrats)</b>	Technocrats who take part in policy making and administration related to road asset management in central/regional government, governmental research institutions or other related public organizations in the road asset management sector.
<b>Educators/ Researchers</b>	Individuals who are responsible for education and research in the road asset management sector in Higher Education and research institutions in target countries.

Candidates are to be nominated by Japanese related Organizations and Universities to further the program’s aim of development of the road asset management sector in each country.

(4) Additional Programs for the participants

Every participant will have an opportunity to participate in custom made programs to improve practical abilities, construction of networks, deepen understanding of Japanese Road Asset Management activities through a visit of Japanese local government, highway company, research institute and private company. All the programs will be held during the vacation period. All programs are carried out in English. Cost to attend the program will be borne by JICA.

## 4. Duration

In principle, 2 years for master’s course and 3 years for Ph.D. course (depending on the program offered by universities).

<b>Master’s Degree Course Participant</b>	<p>From: End of March 2026</p> <p>To: End of March 2028 (minimum) – End of Sep. 2028 (maximum)</p> <ul style="list-style-type: none"> <li>- 6 Months as a Research Student if necessary</li> <li>- 2 years as a master’s course student</li> </ul>
<b>Doctorate Degree Course Participant</b>	<p>From: End of March 2026</p> <p>To: End of March 2029 (minimum) – End of Sep. 2029 (maximum)</p> <ul style="list-style-type: none"> <li>- 6 Months as a Research Student if necessary</li> <li>- 3 years as a doctoral course student</li> </ul>

The following is a list of universities with enrollment of current and former participants under this program. Host universities for JFY2025 will be determined in the selection process.

- Hokkaido University, Graduate School of Engineering
- Kitami Institute of Technology, Graduate School of Engineering
- Tohoku University, Graduate School of Engineering
- Institute of Science Tokyo, School of Environment and Society
- Nihon University, Graduate School of Engineering
- Shibaura Institute of Technology, Graduate School of Engineering and Science
- Saitama University, Graduate School of Science and Engineering
- Gifu University, Graduate School of Engineering / Graduate School of Natural Science and Technology
- Kanazawa Institute of Technology, Graduate School of Engineering
- Osaka University, Graduate School of Engineering
- Kobe University, Graduate School of Engineering
- Hiroshima University, Graduate School of Advanced Science and Engineering
- Kochi University of Technology, Graduate School of Engineering
- Nagasaki University, Graduate School of Engineering
- University of the Ryukyus, Graduate School of Engineering and Science

#### Research themes of former / current participants

[https://www.jica.go.jp/Resource/activities/issues/transport/ramp/ku57pq00002mfxkm-att/research\\_theme\\_list.pdf](https://www.jica.go.jp/Resource/activities/issues/transport/ramp/ku57pq00002mfxkm-att/research_theme_list.pdf)

## 5. Number of Participants

Total Number of Participants will be determined around August 2025.

## 6. Language to be used in this Program

English

## 7. Eligibility

Candidate applicants must satisfy the following requirements:

<b>(1) Nationality</b>	Citizens of the target countries
<b>(2) Age</b>	- Less than forty (40) years of age (as of April 1 <sup>st</sup> , 2025)
<b>(3) Education</b>	For Master's degree course: - At least 16 years of academic background or equivalent - A Bachelor's degree For Doctorate degree course:

	<ul style="list-style-type: none"> <li>- At least 18 years of academic background or equivalent</li> <li>- A Master's degree</li> </ul>
<b>(4) Working Experience /Status</b>	<p>Applicants from government sectors / universities/research institutions are required;</p> <ul style="list-style-type: none"> <li>- to have 2-3 years working experience at road asset management sector, and</li> <li>- to obtain permission for application and securing reinstatement from their current organizations.</li> </ul>
<b>(5) English Proficiency</b>	<ul style="list-style-type: none"> <li>- Adequate English proficiency, both in written and oral communication, in order to complete the master's/ doctoral degree.</li> <li>- Some universities require an English proficiency score such as TOEFL, IELTS, or TOEIC. So taking a higher score before its application is desirable. Please also read the '11. Expenses to be borne by JICA' for taking English proficiency exams.</li> </ul>
<b>(6) Understanding of the Program</b>	<ul style="list-style-type: none"> <li>- Applicants are required to have clear understanding of the objectives of the Program will to contribute to the development of the road asset management sector in their home countries as well as to strengthen the linkage between their countries and Japan after returning home country.</li> </ul>
<b>(7) Others</b>	<p>Applicants must;</p> <ul style="list-style-type: none"> <li>- be both physically and mentally fit for the program,</li> <li>- not be receiving nor applying for scholarship offered by other organizations,</li> </ul> <p>Applicants might be required to attend the activities on the weekends/ holidays in unavoidable circumstances (ex. official exam).</p> <p>Female participants are encouraged to apply for the program.</p>
<b>(8) Gender Equality and Women's Empowerment</b>	<p>JICA seeks more female applicants due to the past records of fewer applications from women. JICA is committed to promoting gender equality and women's empowerment, and provides equal opportunities for all applicants regardless of their sexual orientation or gender identity.</p>

## 8. Admissions

Candidates must be selected as JICA's official candidate through JICA's internal selection procedure and must pass the general entrance examination of the university they have applied to, including examinations to enter the applicants' desired master's degree or Ph.D.

degree course.

JICA shall determine whether the candidate is eligible to participate in training in Japan. JICA shall make a decision on acceptance or rejection based on several factors such as entrance examination results, planned number of participants, medical examination results and others. Reason for the decision will not be disclosed.

## 9. Application Guidelines

Each applicant is required to submit the following documents by the deadline set by JICA Office in the applicants' country.

Application Documents	<ol style="list-style-type: none"><li>(1) Application Form consists of;<ul style="list-style-type: none"><li>▪ Personal Information</li><li>▪ Educational Background</li><li>▪ Work Experiences</li></ul></li><li>(2) Statement of Purpose (Free Format)</li><li>(3) Profile Sheet</li><li>(4) Research Plan (Free Format)</li><li>(5) Undergraduate degree graduation certificate/ Master's degree completion certificate<ul style="list-style-type: none"><li>* Officially certified copies of the original.</li><li>* Written in English or accompanied with official translation in English.</li></ul></li><li>(6) Academic transcript<ul style="list-style-type: none"><li>* Must contain all the grades earned in the university.</li><li>* Officially certified copies of the original.</li><li>* Written in English or accompanied with official translation in English.</li></ul></li><li>(7) A copy of valid Passport with photo (for checking nationality, name, sex, and date of birth. National ID and birth certificate are acceptable if you do not have valid Passport. Certified English translation must be attached if ID is not written in English)</li><li>(8) ID Photo</li><li>(9) Score of English proficiency examination See '<b>7. Eligibility, (5) English Proficiency</b>'</li><li>(10) Health certificate (must be taken at the time of application for entrance examination or within 6 months before coming to Japan, whichever is later, and submitted with Medical History at a later date.)</li></ol>
-----------------------	---

Please kindly note that universities may reject the applicant's application when the

required documents, or the submitted research plan is not accepted by the universities.

Candidate applicants must follow each university's application procedure after the screening. If the applicants withdraw their applications after their official applications to the universities, applicants must inform their withdrawal to the university by letter.

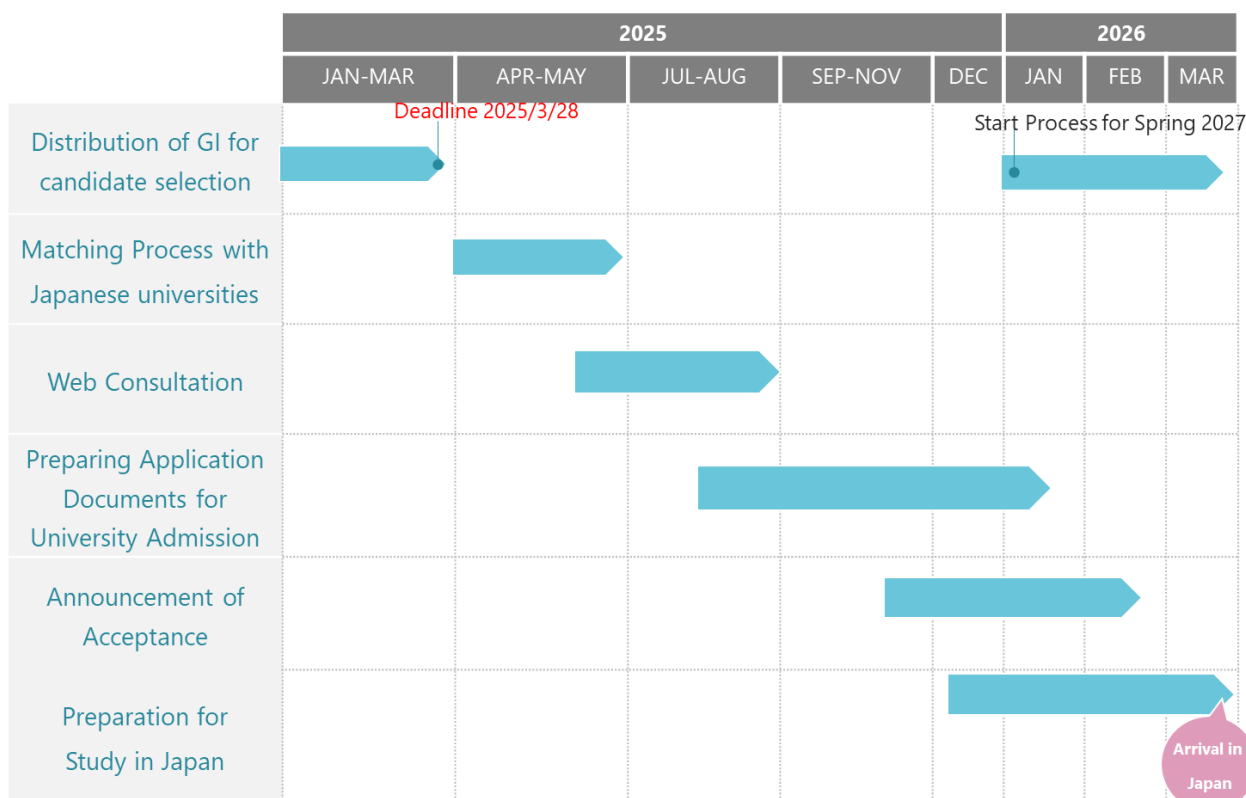
## 10. Schedule

Selection processes are planned as follows despite the possibility of changes:

- By the end of March 2025: Submit candidate information to JICA office (See '**9. Application Documents**' for more details)
- April 2025: Pre-screening will be held based on candidate information (tentative decision of host university)
- May 2025: JICA headquarters will share candidate information with prospective universities, and each supervisor will consider the candidates who are willing to do a web consultation.
- June-August 2025: Web consultation (supervisors will conduct interviews with candidates, brushing up research plans, inspection of maintenance sites, etc.)
- August 2025: Candidates are determined by university, and candidates will start application preparation
- August -December 2025: Application and entrance examination for University Admission
- November-February 2026: Announcement of entrance examination results
- March-April 2026: departure to Japan for enrollment

\*The reasons for disqualification on each selection procedure will NOT BE DISCLOSED.

\*Schedule and program contents might be adjusted appropriately due to unforeseen circumstances.



※ Schedule is subject to change.

## 11. Expenses To Be Borne By JICA

Under the JICA Long-term Trainee Allowance standards, JICA will cover expenses and allowance to participants accepted to the program/course. See the table below for further details. Note that the payments (e.g. for tuition, research support expenses, school support expenses) will not be paid to the accepted participants themselves, but directly to the university or other relevant institutions.

Expense category	Payment amount	Payment frequency
Tuition ( examination fees, entrance fees, course fees)	Actual costs	According to the request from universities
Living Allowance*	JPY 117,000–148,000 per month*	Every month via university
Airfare	Actual costs	Upon arrival in Japan and upon returning home
Outfit Allowance**	JPY100,000	Once (upon arrival in Japan)
Moving Allowance***	Up to JPY164,000-224,000	Once (during the training period)**
Research Support Expenses****	Actual costs (up to JPY360,000 per year)	
Medical care for participants who	In accordance with the	

become ill after arriving in Japan	provisions of the medical insurance	
------------------------------------	-------------------------------------	--

\*Varies according to living area in Japan, type of accommodation, etc.

\*\*Once, after opening bank account in Japan. As it takes several weeks to have the bank account opened, it is strongly recommended to bring cash for personal expenses during the period.

\*\*\*Depending on the accommodation facility. Consultation with the university is required.

\*\*\*\*Research Support Expenses are allowed to be provided via the university and be disbursed with the consultation and approval of the applicant's supervisor.

When English proficiency test score such as TOEFL, IELTS, or TOEIC is required for application to university, fee for taking a test would be provided after consulting with JICA office.

(Notes)

- Please see “Handbook for Knowledge Co-Creation Program for All JICA Scholarship Courses” for specific amount of each item. The amount may be revised every year.
- Other costs should be covered by the participants' organizations or other individuals.
- Participants are not allowed to work during their stay in Japan.
- To invite family to Japan (spouse and children only), participants should be responsible for all expenses, necessary procedure by themselves. JICA does not provide any support or additional financial assistance except issuing necessary documents for the process. JICA strongly recommend participants to invite their family only AFTER 6 MONTHS upon arrival in Japan.

## 12. Expenses Not To Be Borne By JICA

JICA will not bear costs other than the allowances described above. JICA is not responsible for the following expenses especially:

- (1) Passport fees (for re-issuance and extensions, etc.)
- (2) Visa fees of a transit country and transportation expenses to obtain Visa
- (3) Transportation expenses to obtain Japanese Visa
- (4) Domestic travel expenses at the applicant's home country
- (5) Departure tax
- (6) Airport tax/airport facility charges outside of Japan, including third countries
- (7) Customs duty
- (8) Excess baggage charges
- (9) Compensation for lost and/or damaged baggage
- (10) “No show charge” to the transit airport hotel (non-refundable)
- (11) Lost - ticket fee
- (12) Accommodation fee for day-use hotel in return flight
- (13) Transportation expenses other than official programs

- (14) Telephone bill or mini-bar tab at accommodation
- (15) Medical costs related to pre-existing illness, pregnancy, and dental treatment
- (16) Medical cost related to the same illness over 180 days
- (17) “National Health Insurance” fee

Note: If participant/accepted applicant does not follow the regulation of JICA, the participant may have to bear such other cost of necessary expenses.

### 13. Conditions for Participation

The accepted applicants/participants of KCCP are required

- (1) to understand that participants must physically come to Japan to participate in this program at the date designated by JICA,
- (2) not to change the air ticket (and flight class and flight schedule arranged by JICA) and lodging by the participants on their own,
- (3) not to change course subjects or extend the course period,
- (4) to understand that inviting participant’s family members is not recommended before their stay in Japan has passed more than 6 months,
- (5) to return to their home country on the designated flight by JICA, when they finish the program/course or when it is deemed impossible to finish the program within the program period, or when the participant is not successful on the regular course examination, (Please note that participants prepare by yourself all the documents necessary for the regular course examination.)
- (6) to acknowledge that a leave of absence from school is not permitted in principle
- (7) to carry out such instructions and abide by such conditions as may be stipulated by both the nominating Government and the Japanese Government in respect of the course,
- (8) to enroll and complete JICA-DSP online courses, when you receive JICA’s instructions to do so.
- (9) to understand that the maximum duration of research student is 6 months for both master’s and doctor’s courses, and duration of acceptance as a regular student is based on the course years determined by the university,
- (10) to observe the rules and regulations of the program implementing partners to provide the program or establishments, (“Plagiarism” especially is taken severely by enrolling university, regardless of whether it is direct plagiarism or self-plagiarism and participants may be subjected to disciplinary action such as suspension),
- (11) not to engage in political activities, or any form of employment for profit,
- (12) to agree to be discontinued of the program, should the participant (a)violate Japanese laws, JICA’s regulations, or University’s regulations, (b)commit illegal or any type of immoral conduct including sexual harassment, (c)become critically ill or seriously injured, after arrival in Japan.
- (13) to be responsible for paying any cost for treatment of the said health conditions except for the medical care expenses described in the table of “11. Expenses To be borne by

JICA,”

- (14) to return the total amount or a part of the expenditure for KCCP depending on the severity of such violation, should the participants violate the laws and ordinances,
- (15) not to drive a car or motorbike in Japan, regardless of an international driving license possessed,
- (16) to observe the rules and regulations at the place of the participants' accommodation,
- (17) to refund allowances or other benefits paid by JICA in the case of a change in schedule,
- (18) to accept that the Government of Japan will examine applicants who belong to the military or other military-related organizations and/or who are enlisted in the military, taking into consideration of their duties, positions in the organization and other relevant information in a comprehensive manner to be consistent with the Development Cooperation Charter of Japan,
- (19) to submit a Health Certificate in JICA format at the participant's expense, when the participant applied to the entrance examinations or within 6 months before arrival in Japan, whichever is later.
- (20) to accept to submit a second Health Certificate in JICA format if deemed necessary by JICA. The cost of acquiring the Health Certificate will be borne by JICA unless it is required due to the candidates' fault.
- (21) to promptly resubmit your medical history, If there are changes in your health condition, such as pregnancy or a pre-existing disease,
- (22) to be in good health to participate in the program. In order to reduce the risk of worsening symptoms associated with respiratory tract infection, please be honest when consulting the doctor for your Health Certificate,
- (23) not to be receiving nor plan to receive another scholarship during the program,
- (24) to understand not to make other applications for different JICA training courses at the same time,
- (25) to understand that the maximum duration of “Overseas research” and “Temporary Leave (leaving Japan for private purpose)” is 60 days, in principle.
- (26) to accept to take tuberculosis related inspections organized by JICA after arriving in Japan and to submit the results to JICA and university.
- (27) to approve the following conditions on summary of my thesis;
  - ① Summary of the thesis shall be kept at JICA.
  - ② Summary of the thesis can be read by anyone who made a request to JICA .
  - ③ Summary of the thesis can be used for publication by JICA or JICA website.
  - ④ Taking Photocopy of the thesis shall be allowed by anyone with JICA's permission.

## 14. Annex

Annex 1. Application Form

Annex 2. Profile sheet

Annex 3. Check List





***CORRESPONDENCE***

For enquiries and further information, please contact your nearest JICA office.